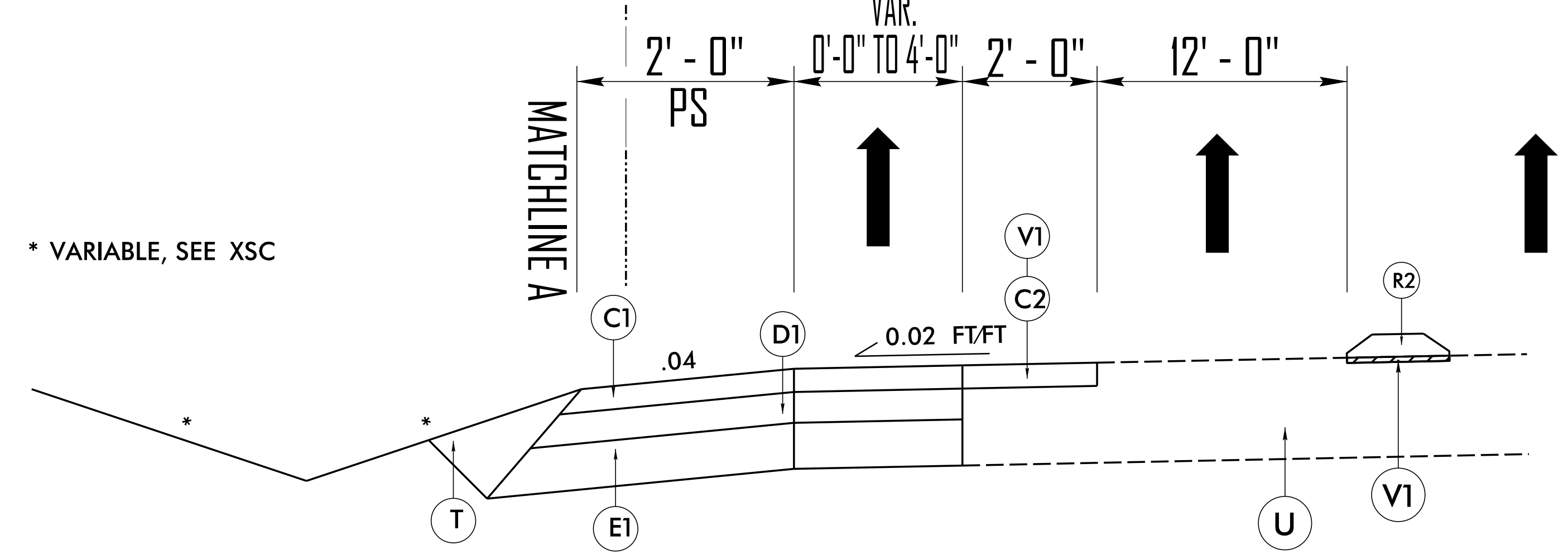


NORTHBOUND LANES

-L- (US 23/441)



* VARIABLE, SEE XSC

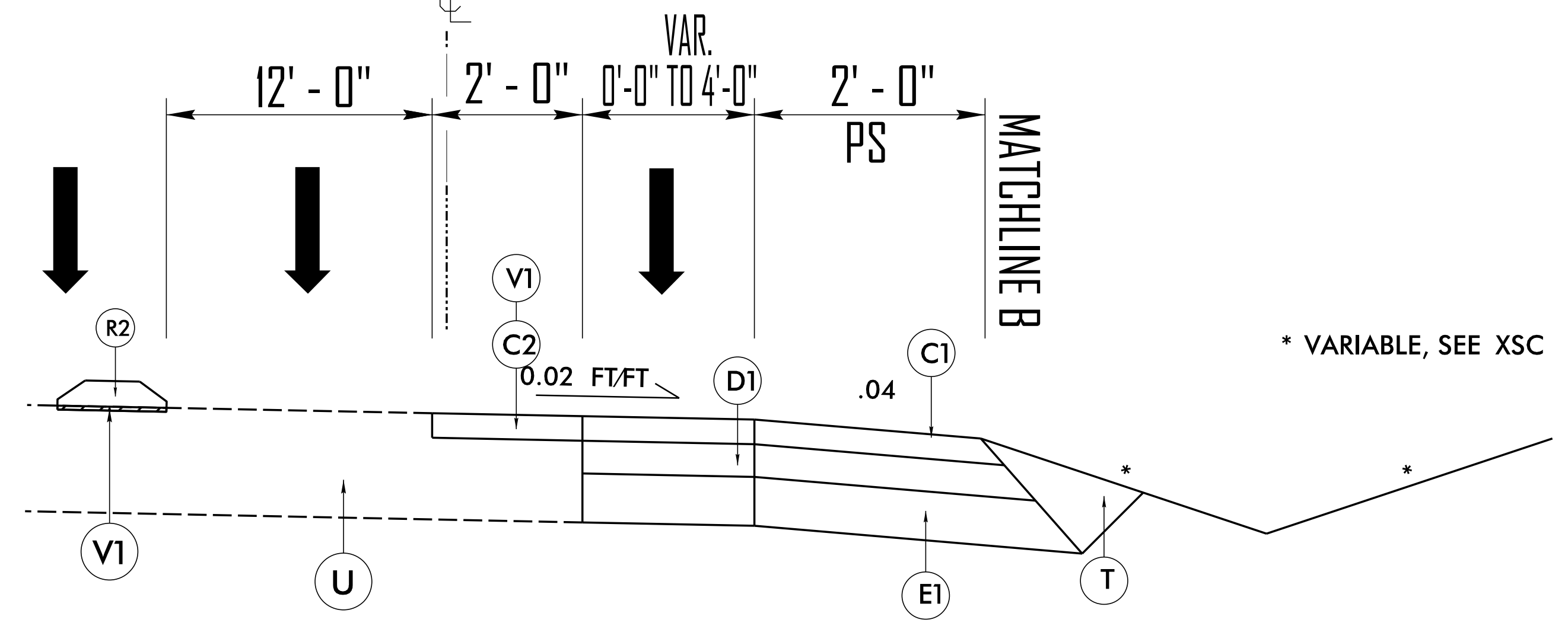
* VARIABLE, SEE XSC

TYPICAL SECTION NO. 2

-L- STA. 24+57.62 THRU 26+38.00

SOUTHBOUND LANES

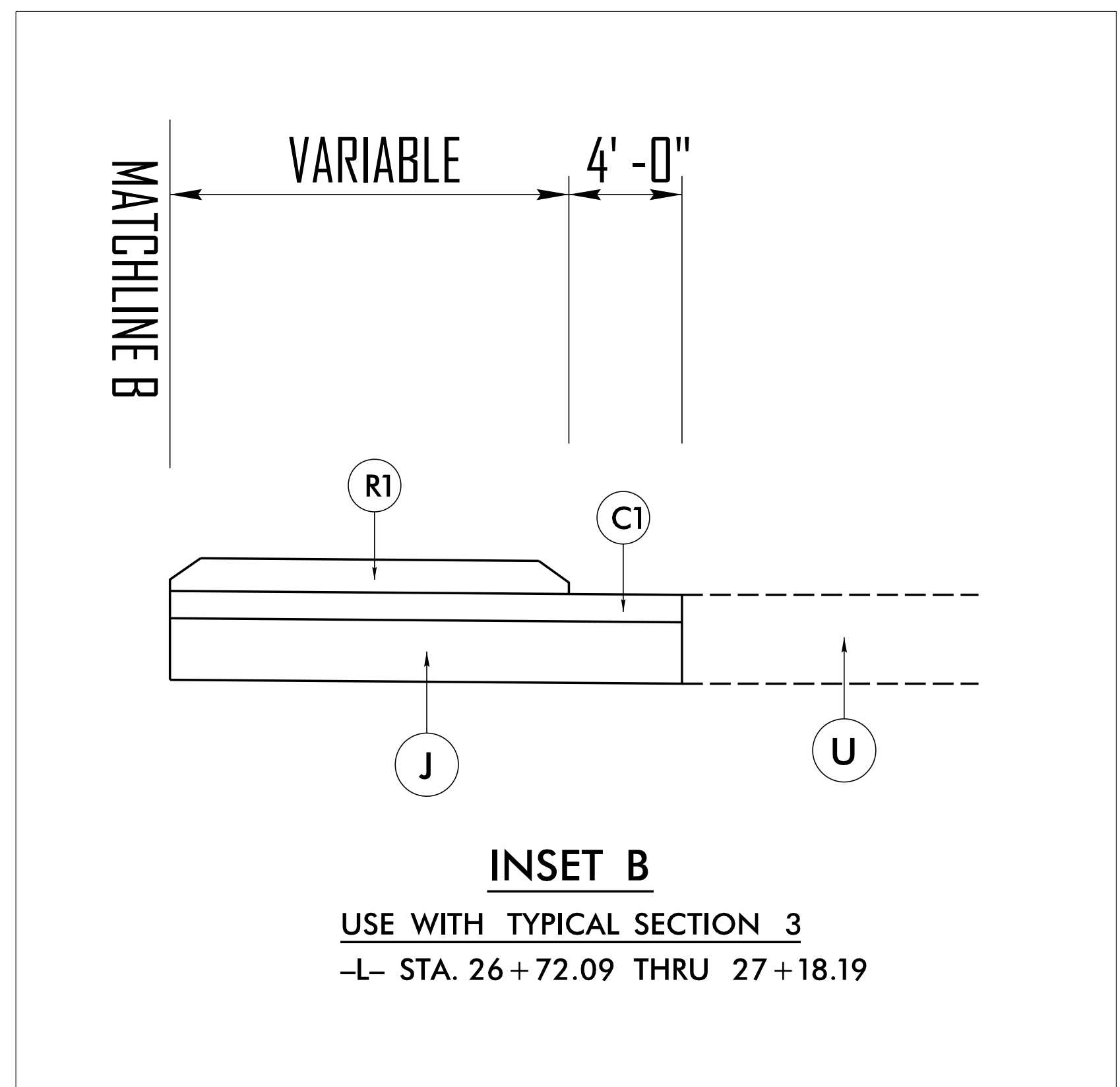
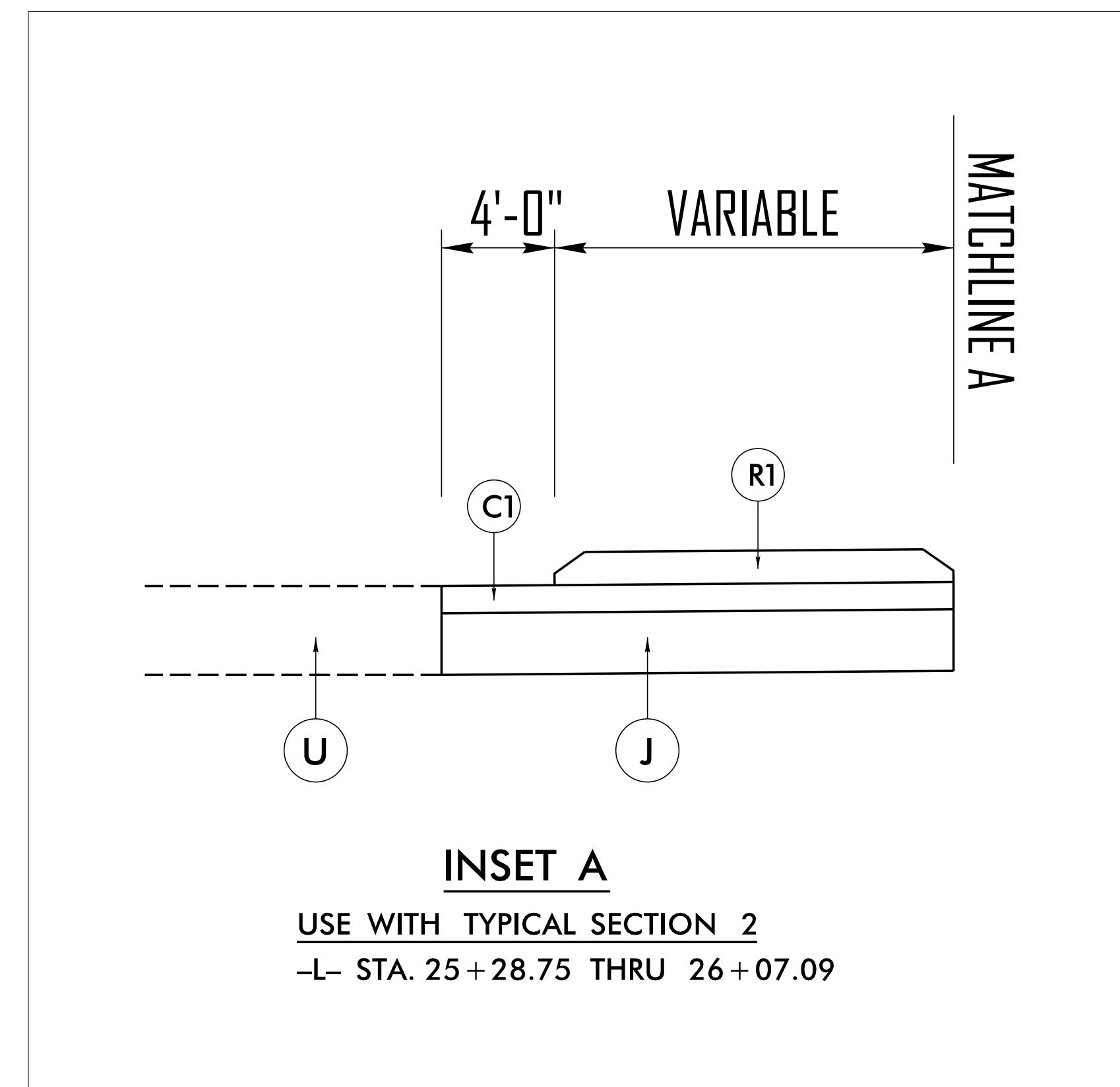
-L- (US 23/441)



TYPICAL SECTION NO. 3

-L- STA. 26+38.00 THRU 27+74.07

NOTE: 5" MONOLITHIC CONCRETE ISLANDS VARIES IN WIDTH AND LOCATION SEE PLANS FOR ACTUAL LOCATIONS



PAVEMENT SCHEDULE

C1	PROP. APPROX. 3" ASPHALT CONCRETE SURFACE COURSE, TYPE S9.5C, AT AN AVERAGE RATE OF 168 LBS. PER SQ. YD. IN EACH OF TWO LAYERS
C2	PROP. APPROX. 1.5" ASPHALT CONCRETE SURFACE COURSE, TYPE S9.5C, AT AN AVERAGE RATE OF 168 LBS. PER SQ. YD.
D1	PROP. APPROX. 2.5" ASPHALT CONCRETE INTERMEDIATE COURSE, TYPE I19.0C, AT AN AVERAGE RATE OF 285 LBS. PER SQ. YD.
E1	PROP. APPROX. 7" ASPHALT CONCRETE BASE COURSE, TYPE B25.0C, AT AN AVERAGE RATE OF 798 LBS. PER SQ. YD.
J	PROP. 8" AGGREGATE BASE COURSE
R1	5" MONOLITHIC CONCRETE ISLAND (SURFACE MOUNTED)
R2	5" MONOLITHIC CONCRETE ISLAND (KEYED IN)
T	EARTH MATERIAL
U	EXISTING PAVEMENT
V1	1.5" PAVEMENT REMOVAL

NOTE: PAVEMENT EDGE SLOPES ARE 1:1 UNLESS SHOWN OTHERWISE.